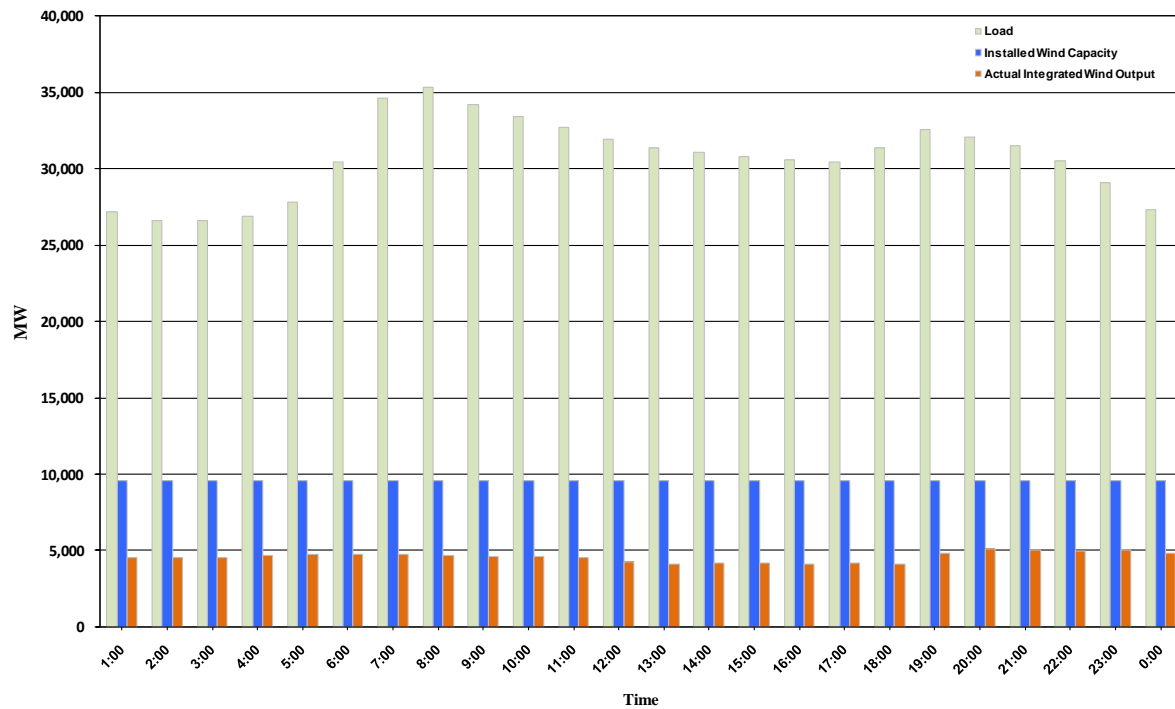




ERCOT Grid Operations Wind Integration Report: 11/19/10

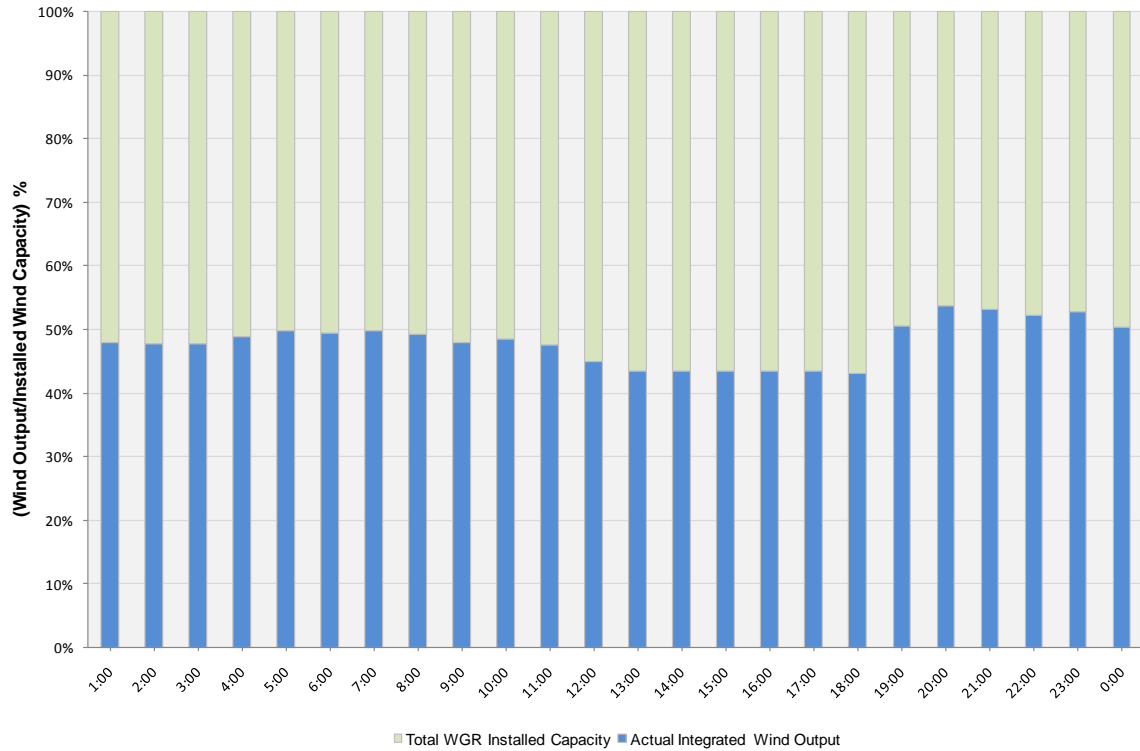
Peak Load	35,330 MW
Load Peak Hour	08
Wind Record 06/12/10	7016 MW
Max Wind value	5483 MW
Wind Peak Hour	18:53:40
Wind Integration %	16.90

Hourly Average Actual Load vs. Actual Wind Output
11-19-2010

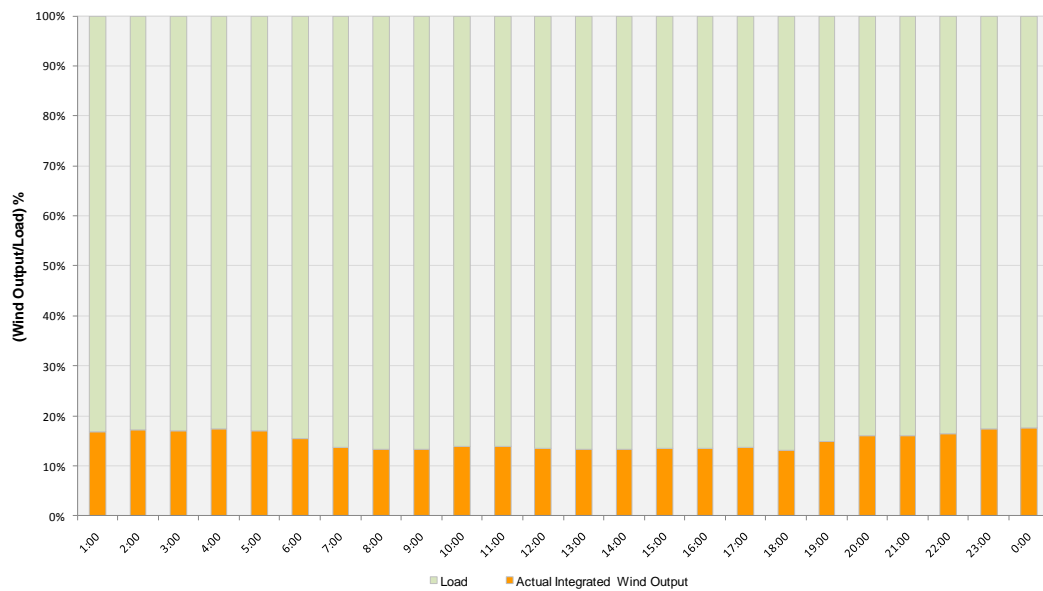




Actual Wind Output as a Percentage of the Total Installed Wind Capacity
11-19-2010



Actual Wind Output as a Percentage of the ERCOT Load
11-19-2010





ERCOT Load vs. Actual Wind Output 11/12/10 - 11/19/10

